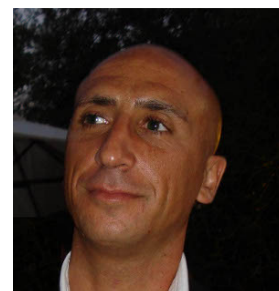


Curriculum Vitae



Personal information

First name(s) / Surname(s) **Alfio Cerami**

Address(es) Centre d'études européennes
Sciences Po
27 rue Saint-Guillaume
75007 Paris, France

Home page <http://www.policy-evaluation.org/cerami/>

E-mail(s) alfio.cerami@policy-evaluation.org

Nationality Italian

Date of birth 11/09/1974

Gender Male

Education and training

Dates 01/09/2001 - 14/01/2005

Title of qualification awarded **PhD (Dr.rer.pol)**

Principal subjects Political Sociology, Economics, Social Policy

Name and type of organisation University of Erfurt, Staatswissenschaftliche Fakultät (Faculty of Economics, Law and Social Sciences) (Germany)

Level in national or international classification Ph.D. in Social Sciences (Dr.Rer.Pol.) (Political Science, Sociology, Economics). Magna cum Laude.
Title of thesis: 'Social Policy in Central and Eastern Europe. The Emergence of a New European Model of Solidarity?'

Dates 01/09/1999 - 31/12/2000

Title of qualification awarded **Master of Arts in European Studies**

Principal subjects European Studies. European Political Cultures and Economies. Democratization Theories.

Name and type of organisation University of Bath (UK), Humboldt Universität zu Berlin (Germany)

Level in national or international classification Master of Arts (MA). Title of thesis: 'Theorien des Transformationsprozesses und ökonomische Veränderung in Ungarn: Vom Gulasch Kommunismus zum Gulasch Kapitalismus'.

Dates 01/09/1994 - 18/11/1998

Title of qualification awarded **Laurea in Sociologia** (Indirizzo Politico-Istituzionale). Dottore in Sociologia (Equivalent to Laurea Degree in Economics, Political Science)

Principal subjects Political Sociology. Political Science. Economics. Social Research Methods. Social Policy.

Name and type of organisation Università "La Sapienza" di Roma, Facoltà di Sociologia

Level in national or international classification Laurea (BA).

Additional Training

Dates	01/11/2006 - 31/05/2007
Principal subjects	Series of seminars on financing and management EU FP7 projects
Name and type of organisation	Sciences Po Paris (DRH)
Dates	01/09/2000 - 31/12/2009
Principal subjects	Several seminars and workshops on quantitative statistical analysis with SPSS and STATA
Name and type of organisation	Various European Universities (La Sapienza of Rome, University of Bath, Humboldt University of Berlin, Sciences Po Paris)
Dates	11/10/2010 and 15/10/2010
Principal subjects	UN TESTS: "Basic Security in the Field" and "Advanced Security in the Field"
Name and type of organisation	United Nations Department of Safety and Security

WORK EXPERIENCE

CURRENT POSTS

(MAIN INSTITUTIONAL AFFILIATION)

Dates	01/06/2008 → 01/06/2011
Occupation or position held	Research Fellow (Research Associate)
Principal Subjects	European Studies/Political Science/Political Sociology/Social Policy
Name and address of employer	Centre d'études européennes, Sciences Po, 28 rue des Saints Pères, 75007 Paris, France. http://www.cee.sciences-po.fr/
Dates	17/01/2011 – 6/05/2011
Occupation or position held	Professor (Professeur/Lecturer)
Principal Subjects	International Relations. "The Construction of the European Union"
Name and address of employer	Southern Methodist University in Paris, Reid Hall, 4, Rue de Chevreuse, 75006 Paris, France.

PREVIOUS POSTS

Dates	1/12/2010-28/2/2011
Occupation or position held	Expert Evaluator
Principal Subjects	Evaluation FP7-Security Projects.
Name and address of employer	Research Executive Agency (REA), European Commission, OV2, Place Rogier, 16, B-1210 - Saint-Josse-Ten-Noode, Belgium.
Dates	1/9/2010-30/10/2010
Occupation or position held	International Consultant
Principal Subjects	Elaboration Social Protection Strategy. Field Research.
Name and address of employer	UNICEF Office Nouakchott, Mauritania.

Dates	1/08/2009-28/2/2010
Occupation or position held	International Consultant
Principal Subjects	The Political Economy to Reduce Child Poverty and Social Exclusion in the CEE-CIS Region
Name and address of employer	UNICEF CEE-CIS Regional Office, Geneva, Switzerland
Dates	01/01/2009-31/05/2009
Occupation or position held	Assistant Professor
Principal Subjects	European Studies, Political Science, International Relations
Name and address of employer	American Graduate School of International Relations and Diplomacy, 101 boulevard Raspail, 75006 Paris, France.
Dates	01/01/2009-15/5/2009
Occupation or position held	Professor (Professeur/Lecturer)
Principal Subjects	Economics of Developing Countries, International Political Economy, Human Rights
Name and address of employer	Schiller International University, Paris Campus, 9 rue Yvart, 75015 Paris, France.
Dates	01/10/2006 – 13/07/2007
Occupation or position held	Research Assistant
Principal Subjects	European Studies/Political Science. Assistant Masters in European Studies (EUROMASTERS PROGRAMME).
Name and address of employer	Centre d'études européennes, Sciences Po, 28 rue des Saints Pères, 75007 Paris, France.
Dates	01/09/2005 – 31/08/2006
Occupation or position held	Post-Doc Research Fellow
Principal Subjects	European Studies/Political Science/Political Sociology/Social Policy. Title of Research: "The Politics of Reforms in Bismarckian Welfare Systems: the Cases of Czech Republic, Hungary, Poland and Slovakia."
Name and address of employer	Centre d'études européennes, Sciences Po, 28 rue des Saints Pères, 75007 Paris, France.

SEMINARS/COURSES

Dates	17/01/2011 – 6/05/2011
Occupation or position held	Professor (Professeur/Lecturer)
Principal Subjects	International Relations. "The Construction of the European Union"
Name and address of employer	Southern Methodist University in Paris, Reid Hall, 4, Rue de Chevreuse, 75006 Paris, France.
Dates	26/01/2009 – 15/05/2009
Occupation or position held	Professor (Professeur/Lecturer)
Principal Subjects	Human Rights. "Human Rights"
Name and address of employer	Schiller International University, Paris Campus, 9 Rue Yvart, 75015 Paris, France.
Dates	26/01/2009 – -31/05/2009

Occupation or position held	Assistant Professor
Principal Subjects	International Relations. History, Politics and Diplomacy in Europe
Name and address of employer	Assistant Professor, American Graduate School of International Relations and Diplomacy (AGSIRD), 101 boulevard Raspail, 75006 Paris, France.
Dates	21/05/2008 – 31/05/2008
Occupation or position held	Lecturer
Principal Subjects	European Public Policy. Frank Ettrich and Alfio Cerami: "Europeanization and National Adaptations"
Name and address of employer	University of Erfurt, Staatswissenschaftliche Fakultät (Faculty of State Sciences), Nordhäuser Str. 63, 99089 Erfurt, Germany.
Dates	01/04/2007 – 31/04/2007
Occupation or position held	Lecturer
Principal Subjects	Comparative Social Policy. Frank Ettrich and Alfio Cerami: "Individual Risks in Post-Industrial Societies".
Name and address of employer	University of St. Petersburg, Centre for German and European Studies, 7/9, Universitetskaja Nab. "NFI), 19934 Russia.
Dates	01/01/2006 – 31/01/2006
Occupation or position held	Lecturer
Principal Subjects	Social Policy and European Integration. Frank Ettrich and Alfio Cerami: "Sozialstaatsmodelle und Europäisierung" [Welfare State Models and Europeanization]
Name and address of employer	University of Erfurt, Staatswissenschaftliche Fakultät (Faculty of State Sciences), Nordhäuser Str. 63, 99089 Erfurt, Germany.
Dates	01/10/2005 – 30/11/2005
Occupation or position held	Lecturer
Principal Subjects	European Integration. Alfio Cerami: "European Integration".
Name and address of employer	Centre Asie Europe, Sciences Po, 27 rue Saint-Guillame, 75007 Paris, France.
Dates	01/05/2005 – 31/05/2005
Occupation or position held	Assistant Professor
Principal Subjects	Comparative Social Policy. Frank Ettrich and Alfio Cerami: "Individual Risks in Western Welfare States".
Name and address of employer	University of St. Petersburg, Centre for German and European Studies, 7/9, Universitetskaja Nab. "NFI), 19934 Russia.
Dates	01/09/2004 – 30/09/2004
Occupation or position held	Lecturer
Principal Subjects	Socio-Economic Research and Social Research Methods. Frank Ettrich and Alfio Cerami: "Methods and Statistics in Socio-Economic Research".
Name and address of employer	University of St. Petersburg, Centre for German and European Studies, 7/9, Universitetskaja Nab. "NFI), 19934 Russia.
Dates	01/09/2002 – 28/02/2003
Occupation or position held	Lecturer
Principal Subjects	Comparative Social Policy. Frank Ettrich and Alfio Cerami: "Social Policy in Central and Eastern Europe: A New European Model of Solidarity?" WS 2002-2003

Name and address of employer University of Erfurt, Staatswissenschaftliche Fakultät (Faculty of State Sciences), Nordhäuser Str. 63, 99089 Erfurt, Germany.

Personal skills and competences

Mother tongue(s) **Italian**

Other language(s)

Self-assessment
European level ()*

English
German
French
Spanish; Castilian

Understanding				Speaking				Writing	
Listening		Reading		Spoken interaction		Spoken production			
C2	Proficient user	C2	Proficient user	C2	Proficient user	C2	Proficient user	C2	Proficient user
C2	Proficient user	C2	Proficient user	C2	Proficient user	C2	Proficient user	C2	Proficient user
C2	Proficient user	C2	Proficient user	C2	Proficient user	C2	Proficient user	C1	Proficient user
C2	Proficient user	C2	Proficient user	C2	Proficient user	C2	Proficient user	B2	Independent user

(*) [Common European Framework of Reference \(CEF\) level](#)

Membership

Member of the American Political Science Association (APSA)
Member of the Network for European Social Policy Analysis (ESPAnet)

Academic Refereeing

Member of the Editorial Board of the Journal of Human Security.
<http://www.rmitpublishing.com.au/jhs.html>

I also act as academic referee for the Journal of Income Distribution, Public Administration, Comparative Political Studies, Social Policy and Administration, Journal of European Social Policy, Nationalities Papers, Zeitschrift für Sozialreform, Croatian Journal of Social Policy and Sciences Sociales et Santé.

Interviews/ Invited Speeches

Expert Interview TV Channel Euronews (<http://www.euronews.net>). daily Program: Europeans. Title of Interview: "Difficult Relationship of French Citizens towards the European Union". Broadcasted in 145 countries from the 5th to the 7th of May 2006.

Expert on European Social Model, European Youth Parliament, Paris: April 2006.

Invited Speech, 'Social Change and Welfare State Developments in CEE and Russia' Wissenschaftszentrum Berlin für Sozialforschung, Berlin, Germany, May 16.

Convenor Stream 18 "Social Policy Transformations in CEE Countries". ESPAnet Annual Conference, 20-22 September 2007, Vienna University of Economics and Business Administration, Austria.

Invited Speech, 'Central Europe in Transition: Emerging Models of Welfare and Social Assistance'. Conference "Building Capacity, Improving Quality. Social Services in the New Member States", European Social Network (ESN), Ljubljana, Slovenia, May 19-20.

Convenor Stream "Migration and Social Protection in the Enlarged European Union". ESPAnet Annual Conference, 18-20 September 2008, Finnish Centre for Pensions, Helsinki, Finland.

Key Speaker "East-West Round Table: Learning from the Eastern Experience". ESPAnet Annual Conference, 18-20 September 2008, Finnish Centre for Pensions, Helsinki, Finland.

UNICEF Expert Consultation "What Works in Reducing Child Poverty in Transition Countries, Geneva 29-30 January 2009.

NOTRE EUROPE Expert Consultation "The European Renewed Social Agenda", Paris, 13th February and 25th March 2009.

Panel Chair "Special Issues in Democracy". AGSIRD Annual Graduate Student Conference, 2-3 June 2009, American Graduate School of International Relations and Diplomacy (AGSIRD), Paris, France.

Guest Lecture "Pension Reforms and Demographic Challenges in CEE countries" Hertie School of Governance, 19 October 2009, Berlin, Germany.

Guest Lecture "The Impact of the Global Financial Crisis in CEE Countries" German Marshall Fund of the United States, International Workshop "Divided Europe: 20 Years After Lessons for Tom Paris, France

Expert Interview TV Channel France24 (<http://www.france24.com/en/>). Program: FOCUS: 'The Trial of Nicolae Ceaucescu and the 'Stolen Revolution' in Romania', 21st December 2009.

UNICEF Invited Seminar "The Political Economy to Reduce Child Poverty in the CEE-CIS Region", UNICEF, Geneva, 4th February 2010.

Expert Interview TV Channel France24 (<http://www.france24.com/en/>). Program: FOCUS: 'Moldova & Romania: a united future?', 26 March 2010.

Expert Interview TV Channel France24 (<http://www.france24.com/en/>). Program TOP STORIES: European Union: Its Future at Stake?, 6 May 2010.

Expert Interview TV Channel France24 (<http://www.france24.com/en/>). Program FOCUS: What is the Future for Travelling People?, 5 August 2010.

Convenor Stream "Post-Socialist Welfare Systems". ESPAnet Annual Conference, 2-4 September 2010, ELTE University, Budapest, Hungary.

Expert Interview TV Channel France24 (<http://www.france24.com/en/>). Program The Debate: Europe Strikes: Is Austerity the Answer?, 29 September 2010.

Expert Interview TV Channel France24 (<http://www.france24.com/en/>). Program The Debate: Europe's Fear of Islam, 21 October 2010.

Research Interests

- Political Sociology
- International Political Economy
- Development Economics
- Democratization Theories
- European Studies
- Comparative Social Policy
- Migration
- Human and Socio-Economic Security

Participation in International Projects

- Central and Eastern Europe, South-East Europe, Russian Federation, Commonwealth of Independent States (CIS)

- Sub-Saharan Africa

- Middle East and North Africa

2000-onwards

WWW Virtual Library: Evaluation

<http://www.policy-evaluation.org>

Section of WWW Virtual Library Project (<http://www.vlib.org/>), Geneva, Switzerland

The WWW Virtual Library: Evaluation is an online database of high quality Internet resources related to public policy evaluation. It is part of the Virtual Library project At present, the database points to hundreds of web-sites, and each one has been selected and described. The catalogue is browsable or searchable by subject area.

2006-2007

"Promoting Human Security in Western Europe and Eastern Europe"

UNESCO/Sciences Po (organised by Peter Burgess - PRIO Norway - & Shahrbanou Tadjbakhsh - CERI Program for Peace and Human Security -)

This project analyzes various challenges to the human security of the most vulnerable groups in Western and Eastern Europe, and the various policy and research initiatives launched in the EU. The final publications include analysis, recommendations and a bibliography.

2005-2008

"Transformation of European Governance and Transformation of Public Policies" (CONNEX, FP6)

Participation at various meetings, contribution with various papers.

The Network of Excellence CONNEX ("Connecting Excellence on European Governance") is dedicated to the analysis of "Efficient and Democratic Multilevel Governance in Europe". CONNEX has two main objectives: First of all, it intends to mobilise outstanding scholars all over Europe to deepen our knowledge of the present state and likely future development of European multilevel governance, its assets and deficiencies in terms of problem-solving capacity and democratic legitimacy; Second, it aims at building a Europe-wide research community which stands for scientific excellence and for providing added value for prospective users.

2005-2009

"The Politics of Social Security Reforms in Continental Europe".

Centre d'études européennes of Sciences Po (Paris) (organised by Bruno Palier, CEVIPOF)

The principal aim of the project is to evaluate the impact of the similar social protection institutions that characterize Bismarckian welfare states - eligibility based on work, earnings-related benefits, contribution financing and devolved parastate management - on the politics, timing and content of social reforms over the last 25 years.

2005-2009

"Transformation of Social Policy in Europe: Patterns, Issues and Challenges for the EU-25 and Candidate Countries"

METU Ankara (Turkey) with support of the European Commission

Current phases of EU enlargement generated several pressures for coordination between the EU and new member states' policy regimes. Recognizing the profound significance of social policy for European integration, this project aims at analysing the interaction between the broad understanding of European social policy and social policy regimes in the new member, and candidate countries of the EU. In particular, the project aims to analyse the processes, dynamics, and extent to which the broad guidelines of European social policy is incorporated into the social policy regimes of the new members, and the candidate countries of the EU.

2007- 2009

Welfare State Transformations and Adaptations in Central and Eastern Europe

Centre d'études européennes of Sciences Po (Paris) (organised by Alfio Cerami, Centre d'études européennes, Sciences Po)

The project "Welfare State Transformations and Adaptations in Central and Eastern Europe" provides in-dept insights on the on-going processes of institutional transformation and adaptation taking place in Central and Eastern Europe (CEE) since the dissolution of the Iron Curtain. It adopts novel theoretical approaches to study the diverse welfare state pathways that have evolved across Central and Eastern Europe since the fall of communism in 1989. Going beyond existing path dependency and neo-institutionalist explanations, it highlights the role of explanatory factors such as micro-causal mechanisms, ideas, discourses, path departures, power politics, and elite strategies.

2009-2010

Migration and Social Protection in the New Europe (book project)

Centre d'études européennes of Sciences Po (Paris) (organised by Alfio Cerami, Centre d'études européennes, Sciences Po, Emma Carmel and Theo Papadopoulos University of Bath).

The project 'Migration and Welfare in the 'New' Europe' aims to provide a thorough grounding in the comparative analysis of the interaction of migration, migration policies and social protection in the enlarged European Union. It provides both theoretical reflections on this interaction, and empirical analysis of how this interaction is played out in the European Union and in particular welfare states. Leading experts in the field cover a broad spectrum of country and policy areas.

2009-2013

POLINE (The Politics of Inequality)

Sciences Po (Centre d'études européennes; Observatoire sociologique du changement); Harvard University (Multidisciplinary Program on Inequality and Social Policy; European Network on Inequality); Oxford University (Oxford Network for Social Inequality Research; Oxford Centre for the Study of Inequality and Democracy); Princeton University (Global Network in Inequality).

Equality is at the heart of the democratic ideal. Yet, in most democracies today social inequalities are either persisting, as in France, or are on the rise, as in the United States. And even when inequalities are not increasing, the feeling that they are too important is a predominant concern of Western populations. The POLINE research network aims at investigating what are the political consequences of this paradox.

<http://www.sciences-po.fr/recherche/fr/recherche/POLGAP/index.htm>

2009-2010

The Political Economy to Reduce Child Poverty in the CEE-CIS Region (UNICEF CEE-CIS Regional Office)

Study Financed by the UNICEF Regional Office for the CEE-CIS. In collaboration with Dr. Paul Stubbs, The Institute of Economics, Zagreb, Croatia.

Study comprising the following countries: Albania, Armenia, Azerbaijan, Belarus, Bosnia and Herzegovina, Bulgaria, Croatia, Czech Republic, Estonia, Former Yugoslav Republic of Macedonia, Georgia, Hungary, Kazakhstan, Kyrgyzstan, Latvia, Lithuania, Moldova, Montenegro, Poland, Romania, Romania, Russian Federation, Serbia, Slovak Republic, Slovenia, Tajikistan, Turkmenistan, Ukraine, UN Administered Province of Kosovo, Uzbekistan.

This study is an attempt to explore the drivers of economic and societal progress in the post-communist transition countries in Central and Eastern Europe and the Commonwealth of Independent States (CEE-CIS), through the articulation of a political economy approach. It seeks to combine analysis of political economy regimes with a focus on political choices in order to understand the policy spaces which may be opened up to promote child-centered policies.

2010 (September-October)

Elaboration Social Protection Strategy (UNICEF-Mauritania)

Elaboration Social Protection Strategy in Mauritania. Assistance international organization in defining the future national social protection strategy. Identification and validation of key priorities of the social protection strategy (also in terms if human development). Identification and validation ok key priorities by sector of intervention. Definition and approval triennial plan. Definition and validation mechanisms of institutional coordination. Organization exploratory and validation workshop.

List of Publications

Books

Cerami, A. (2006), *Social Policy in Central and Eastern Europe. The Emergence of a New European Welfare Regime*, LIT Verlag: Münster, Hamburg, Berlin, Vienna, London.

Cerami, A. (2012 fc), *Permanent Emergency Welfare Regimes in Sub-Saharan Africa*, Basingstoke, Palgrave Macmillan.

Edited Books

Cerami, A. and Vanhuyse, P. (eds) (2009), *Post-Communist Welfare Pathways. Theorizing Social Policy Transformations in Central and Eastern Europe*, Palgrave Macmillan: Basingstoke.

Carmel, E., Cerami, A. and Papadopoulos, T. (eds) (2011), *Migration and Welfare in the New Europe. Social Protection and the Challenges of Integration*, Bristol: Policy Press.

Collective Monographs

Cerami, A. (2007). *Promoting Human Security: Ethical, Normative and Educational Frameworks in Western Europe*. UNESCO, Paris. (together with P. Burgess, A. Amicelle, E. Bartels, R. Bellanova, E. Eggum, G. Hoogensen, S. Kittelsen, K. Knibbe, M. de Koning, K. Koser, K. Krause and O. Salemink)

Chapters in Books

Cerami, A. (2008), *Europeanization and Social Policy in Central and Eastern Europe*, in François Bafoil and Timm Beichelt (eds.) *Européanisation. D'Ouest en Est. Coll. Logiques Politiques*, L'Harmattan: Paris, pp. 137-168.

Cerami, A. (2009), 'Mechanisms of Institutional Change in Central and Eastern European Welfare State Restructuring', Cerami, A. and Vanhuyse, P. (eds), *Post-Communist Welfare Pathways. Theorizing Social Policy Transformations in Central and Eastern Europe*, Palgrave Macmillan: Basingstoke, pp. 35-52.

Cerami, A. and Stanescu, S. (2009), 'Welfare State Transformations in Bulgaria and Romania', in Cerami, A. and Vanhuyse, P. (eds), *Post-Communist Welfare Pathways. Theorizing Social Policy Transformations in Central and Eastern Europe*, Palgrave Macmillan: Basingstoke, pp. 112-128.

Cerami, A. and Vanhuyse, P. (2009), 'Introduction: Social Policy Pathways, Twenty Years After the Fall of the Berlin Wall', in Cerami, A. and Vanhuyse, P. (eds), *Post-Communist Welfare Pathways. Theorizing Social Policy Transformations in Central and Eastern Europe*, Palgrave Macmillan: Basingstoke, pp.1-16.

Cerami, A. (2010), 'Happiness and Socio-Economic Transformations in the Russian Federation', in Greve, B. (ed), *Happiness and Social Policy in Europe*, Edward Elgar: Cheltenham, pp.101-119.

Cerami, A. (2010), 'The Politics of Social Security Reforms in Czech Republic, Hungary, Poland and Slovakia', in Bruno Palier (ed.), *A Long-Good Bye to Bismarck? The Politics of Reforms in Continental Europe*, Amsterdam University Press: Amsterdam, pp. 233-254.

Cerami, A. (2010), '*Permanent Emergency Welfare Regimes and Human Development in West Sub-Saharan Africa*', in Harrison, L. P. (ed.), *Social Policy: Challenges, Developments and Implications*, Nova Science Publishers: New York.

Cerami, A. (2011), 'Human Rights and the Politics of Migration in the European Union', in Carmel, E., Cerami, A. and Papadopoulos, T. (eds), *Migration and Welfare in the New Europe. Social Protection and the Challenges of Integration*, Bristol: Policy Press, pp. 67-84.

Cerami, A. (together with Carmel, E.) (2011), 'Governing migration and welfare: institutions and emotions in the production of differential inclusion', in Carmel, E., Cerami, A. and Papadopoulos, T. (eds), *Migration and Welfare in the New Europe. Social Protection and the Challenges of Integration*,

Bristol: Policy Press, pp. 1-22.

Cerami, A. (together with Carmel, E. and Papadopoulos, T.) (2011) 'Conclusions: What Future for Migration?', in Carmel, E., Cerami, A. and Papadopoulos, T. (eds), *Migration and Welfare in the New Europe. Social Protection and the Challenges of Integration*, Bristol: Policy Press, pp. 245-258.

Cerami, A. and Wague, A. (2012 fc), 'Africa', in Greve, B.(ed), *International Handbook of the Welfare State*, London: Routledge.

Articles in Journals

Cerami, A. (2011 fc), Social Mechanisms in the Establishment of the European Economic and Monetary Union. *Politics & Policy*, vol. 39, no. 3

Cerami, A. (2011 fc) Ageing and the Politics of Pension Reforms in Central Europe, South-Eastern Europe and the Baltic States. *International Journal of Social Welfare*.

Cerami, A. (2010). Human Security in the Russian Federation. *Journal of Human Security*, vol. 6, no. 2., pp. 7-27.

Cerami, A. (2009). Socio-Economic Transformations in Post-Communist Countries: Central and Eastern Europe and Russia Compared. *Romanian Journal of Political Science*, vol. 9., no. 2, pp. 25-41.

Cerami, A. (2009), Változó Közép-Európa: a jólét és a szociális segélyezés kialakuló modellyei [Central Europe in Transition: Emerging Models of Welfare and Social Assistance], *Hungarian Social Policy Review ESÉLY*, no. 1, 28-50. English version available.

Cerami, A. (2009), Welfare State Developments in the Russian Federation: Oil-Led Social Policy and the 'Russian Miracle'. *Social Policy & Administration*, vol. 43, no. 2, 105-120.

Cerami, A. (2008), New Social Risks in Central and Eastern Europe: The Need for a New Empowering Politics of the Welfare State. *Czech Sociological Review*, 44 (6), 1089-1110.

Working/Discussion Papers

Cerami, A. (2009), Social Mechanisms in the Establishment of the European Economic and Monetary Union, Cahier européen n° 03/2009 Paris: Centre d'études européennes, Sciences Po.

Cerami, A. (2007), Europeanization, Enlargement and Social Policy in Central and Eastern Europe, Cahier européen n° 01/2007 Paris: Centre d'études européennes, Sciences Po. http://portedeurope.org/IMG/pdf/Cerami_Connex_Paper.pdf

Cerami, A. (2006), Poverty and Social Structure in Russia: An Analysis of the First Decade of Transition, Luxembourg Income Study Working Paper no. 445, Luxembourg: Luxembourg Income Study. <http://www.lisproject.org/publications/liswps/445.pdf>

Cerami, A. (2006), Why Should Central and Eastern European Societies still be Considered as Democracies at Risk: An Analysis of Labour Structure and Preferences for One-Party System, Cahier européen n° 01/2006, Paris: Centre d'études européennes, Sciences Po. <http://portedeurope.org/IMG/pdf/CahierCERAMI042006.pdf>

Cerami, A. (2004), Germany after the Unification: The Exclusive Society?, Staatswissenschaftliche Fakultät Discussion Paper no.: 2004-001SC. Erfurt: University of Erfurt. <http://www.innovationsoekonomie.de/discussion-paper/social-sciences/2004-001SC.pdf>

Cerami, A. (2003), *The Impact of Social Transfers in Central and Eastern Europe*, Luxembourg Income Study Working Paper no. 356. Luxembourg: Luxembourg Income Study. <http://www.lisproject.org/publications/liswps/356.pdf>.

Conference Papers

Cerami, A. (2008), 'Mechanisms of Institutional Change in Central and Eastern European Welfare State Restructuring', paper presented at the conference "Cross-Border Influences in Social Policy", ESPAnet Conference 2008, 18-20 September 2008, Finnish Centre for Pension, Helsinki, Finland.

Cerami, A. 2008, 'Central Europe in Transition: Emerging Models of Welfare and Social Assistance', paper presented at the conference "Building Capacity, Improving Quality. Social Services in the New Member States", European Social Network (ESN), Ljubljana, Slovenia, May 19-20.

Cerami, A. (2006/2007), *The Politics of Reforms in Bismarckian Welfare Systems: The Cases of Czech Republic, Hungary, Poland and Slovakia*, paper presented at the project conference "A long good bye to Bismarck? The politics of welfare reforms in Continental Europe", June 16-18, 2006, The Minda de Gunzburg Center for European Studies at Harvard University, USA. Revised versions also presented at: Connex workshop "The Europeanization of the reforms of welfare systems" 8-10 March 2007, CEVIPOF, Paris, France; ESPAnet Annual Conference, 20-22 September 2007, Vienna University of Economics and Business Administration, Austria.

Cerami, A. (2006), *New Social Policy Ideas in the Making: The Case of Central and Eastern Europe*, paper presented at the Fourth Annual ESPAnet Conference "Transformation of the Welfare State: Political Regulation and Social Inequality" September 21-23, University of Bremen, Germany.

Cerami, A. (2006), *Europeanization, Enlargement and Social Policy in Central and Eastern Europe*, paper prepared for the FP6 CONNEX (Connecting Excellence on European Governance) workshop, Paris, 30th May 2006.

Cerami, A. (2006), *The Reform Challenges of the Central and Eastern European Welfare Regime*, paper presented at the international conference "Transformation of Social Policy in Europe: Patterns, Issues and Challenges for the EU-25 and Candidate Countries", April 13-15, 2006, Department of Political Science and Public Administration – METU, Ankara, Turkey.

Cerami, A. (2005), *Social Policy in Central and Eastern Europe. The Emergence of a New European Model of Solidarity?*, paper presented at the Third Annual ESPAnet Conference "Making Social Policy in the Postindustrial Age" September 22-24, University of Fribourg, Switzerland.

Invited Papers at Seminars

Cerami, A. (2007), *Social Change and Welfare State Developments in CEE and Russia*, invited paper and lecture at Wissenschaftszentrum Berlin für Sozialforschung, Berlin 16.5.2007.

Cerami, A. (2007), *From Electoral to Policy Representation: A Comparison of 34 Democracies*, invited paper and lecture at seminar ECOPOL, Sciences Po, Paris.

Book Reviews

Cerami, A. (2004). Book Review: Ferrera, M. & Gualmini, E. (2004), *Rescued by Europe? Social and Labour Market Reforms in Italy from Maastricht to Berlusconi*, 2004, *Journal of Income Distribution*, volume 13, number 1-2 (Spring-Summer), pp.147-149.

Cerami, A. (2006), Book Review: Schludi, M. (2005), *The Reform of Bismarckian Pension Systems: A*

Comparison of Pension Politics in Austria, France, Germany, Italy and Sweden, Amsterdam, Amsterdam University Press. *Journal of European Social Policy*, 16 (4), pp. 403-404.

Cerami, A. (2008). Book Review: Clasen, J. & Siegel, N.A. (eds.) (2007), Investigating Welfare State Change. The 'Dependent Variable Problem' in Comparative Analysis, Cheltenham, Edward Elgar. *Journal of European Social Policy*, 18 (4), pp. 410-411.

Cerami, A. (2008). Book Review: Vanhuyusse, P., Divide and Pacify. Strategic Social Policies and Political Protests in Post-Communist Democracies, CEU Press, Budapest. *Acta Politica.*, 43 (4) 508-509.

Cerami, A. (2011). Book Review: Frye, Timothy (2010), Building States and Markets after Communism. The Perils of Polarized Democracy, New York: Cambridge University Press. *Revue Française de Science Politique*, forthcoming.

Research Reports

CONNEX 2008. The Transformation of EU Policies? EU Governance at Work. RG6 Concluding Conference, Sciences Po Paris, 17-18 January 2008.

CONNEX 2007. How Much is Known about the "Community Method"? CONNEX Workshop, Sciences Po, 29 November 2007.

Cerami, A. and Stubbs, P. 2010. The Political Economy to Reduce Child Poverty and Exclusion in the Transition Countries. Thematic Study. UNICEF: GENEVA.